

ABS Enterprise® Data Sheet

EXCHANGE DATA PROTECTION

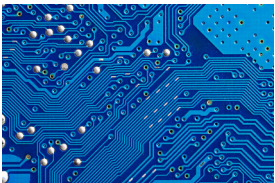
ABS Enterprise for Exchange

The solution provides continuous protection and health monitoring of Exchange data stores. ABS Enterprise for Exchange also includes complete Information Store coverage, plus granular support for quick search, recovery and analysis of mailbox content.

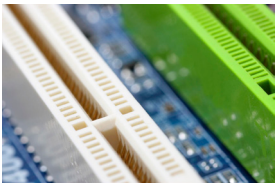
ABS Enterprise for Exchange enables restoration of individual email messages, contacts, folders, or mailboxes to a live Exchange server or directly to a PST – solving costly and time consuming IT challenges.

Complete Disaster Recovery

Flexible recovery capabilities: onsite via ABS Continuity Appliance® or offsite via ABS Recovery Site. The solution leverages critical disaster recovery processes:



- Bare-metal recoveries of Exchange Server to similar or dissimilar hardware
- Quick failover to a virtual instance
- Enables P2V, V2V, V2P, P2P migrations



EXCHANGE MIGRATION

Exchange migrations can be costly and time consuming.

- ABS Enterprise for Exchange allows you to migrate to a new version of Exchange quickly and easily
- Drag and drop mailboxes from the old Exchange database to the new production server in minutes

User Scenarios

1. Message Recovery

Conduct a message level search via Granular Exchange Recovery. Search by date, subject, message content, email address.

Search/Recovery time= 15 - 30 min*

2. Deleted Mailbox

Conduct a mailbox recovery including all messages, folder, contacts, calendar, tasks. Users can access email during the recovery.

Recovery time= 15 - 30 min*

*Recovery times vary due to size / scope

FAST BACKUPS

- Continuous application-aware snapshots of Exchange 2010 / 2007 / 2003
- Efficient snapshot compression and de-duplication
- Eliminates brick level backups

DEEP EXCHANGE INTEGRATION

- Exchange log truncation
- Message level search and recovery
- Recover Storage Groups and individual Exchange Data Stores
- Mount snapshots as a Windows share for data mining and Exchange database maintenance

Supported Platforms:

Exchange 2010 / 2007 / 2003

